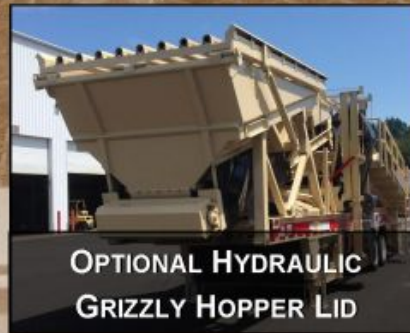


1807 BAKER WAY KELSO WA 98626



PHONE: (360) 577-7213 FAX: (360) 425-6985

# RDO 616 SCREENER



Travel Specifications	
Weight At Pin	13,050 lbs.
Weight At Axle	(Front) 19,500 lbs. (Rear) 18,660 lbs.
Total weight	51,250 lbs.
Height	13'-6"
Width	11'-11"
Length	50'

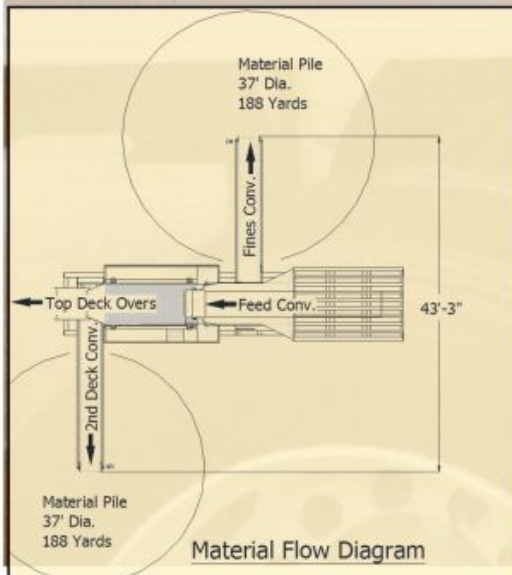
Diesel Engine	
Manufacturer	Caterpillar
Model	C4.4
E.P.A.	Tier 3 Certified
Turbo	Turbocharged non Aftercooled
Horsepower	91hp @ 2200 rpm
Radiator	Upgraded AKG Radiator
Cooling	Water Cooled
Fuel Tank	65 Gallon

Hydraulics	
Legs	2 hydraulic Jacking Legs
Aux. Valve	For Off Board Conv. Or Opt. Grizzly Top
Hydraulic Tank	110 Gallon

Feeder Hopper	
Standard (Grizzly Ready)	Approx. 12 cu Yards
Wing Wall	
Hopper (Opt.)	18 Yards
Loading Height	13'-6"

Screen - 6x16x2D Step Deck	
Drive - Type	Hydraulic
Drive - Cubic Inch	4.5
Drive - RPM	1641
Screen Throw	5/8"
Suspension	Rubber Spring
Bearings	140mm

# RDO 616 SCREENER



Feeder / Grizzly Options	
14' Hyd End Dump Grizzly (HEAVY DUTY)	

Misc. Options	
Single Shaft Soil Shredder	
Extra Axle (From Double To Triple)	
2 And 3 Axle Super Single Duplex Tire/Axle	

Leg Options	
2 Or 4 Rear Hydraulic Legs	

Screen Options	
Wet Kit	

Conveyor Options	
Belting Options: 3-Ply, Chevron Cleating, Hot Splice	

Conveyors					
	Length	Width	Motor	Cubic Inches	F.P.M.
Feed Conveyor	23'-10"	48"	Hyd	19	Vari.
Under Screen Conveyor		48"	Hyd	45	168
Side Discharge Conveyor	16'-4"	30"	Hyd	24	312
Rear Discharge Conveyor	16'-4"	30"	Hyd	45	263